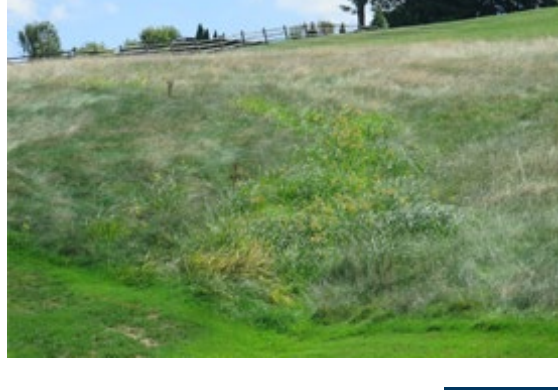


Nutsedge And Kyllinga Control Strategies

By Elliott Dowling and Zach Nicoludis



Weed encroachment is possible on every golf course, regardless of grass type, weather or budget. Even with a sound weed management program, breakthrough is inevitable. Kyllinga and nutsedge have proven extremely problematic on many golf courses in recent years and require aggressive control strategies for successful management. This article provides information on cultural and chemical control of these frustrating weeds in both warm- and cool-season turf.

[Read More](#)

Multimedia Content



Fore The Golfer: Pest Management On Golf Courses

Superintendents strive to maintain healthy turf, but a variety of pests can impact playing surfaces. Continually scouting for pest activity and using targeted control measures helps superintendents manage the impact of pests in an environmentally and economically sustainable way.

[Watch Video](#)



Fore The Golfer: What You Need To Know About Spray Applications

A variety of precision technologies are used to make the golf course applications that help to maintain quality playing conditions. GPS-guided sprayers and specialized nozzles enhance the effectiveness and efficiency of applications, which reduces costs and improves playability.

[Watch Video](#)

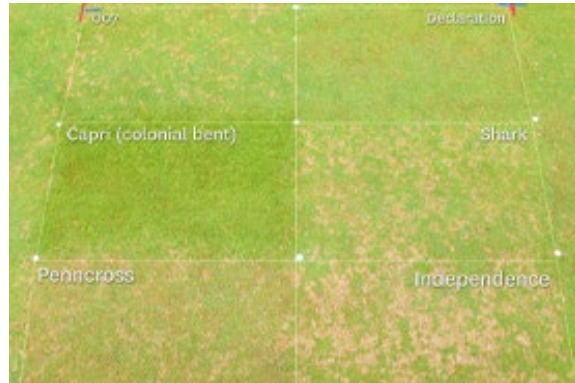
USGApublications

Print Versions Now Available

- USGA Recommendations For A Method Of Putting Green Construction
- Building The USGA Putting Green: Tips For Success

[SHOP NOW](#)

Research You Should Know



Dollar Spot Control — Predictive Models, Threshold-Based Applications Or Calendar-Based Applications?

Outbreaks of dollar spot can be challenging and costly to control. Traditional fungicide control methods involve calendar-based applications made regardless of disease incidence. Researchers at Rutgers University studied whether this pest could be controlled more effectively with model-based and threshold scheduling. They found that results could be improved based on the bentgrass cultivar.

[Read More](#)

Fore The Golfer



To Pull Or Not To Pull?

Weeds on the golf course can be frustrating for golfers and superintendents alike. Nutsedge is a grassy weed that can create serious playability and aesthetic issues by growing faster and thicker than everything around it. While some golf course weeds can be effectively removed by hand, nutsedge often requires chemical control to avoid an infestation that can seriously impact playing conditions.

[Read More](#)

Regional Updates



West Region

Soluble salts tend to accumulate in putting greens during the summer. Using these key strategies can help to keep you from getting surprised by turf decline during the hot summer months.

[Read More](#)



Northeast Region

Removing a ball from the cup with the flagstick in should not cause damage to the edges of the hole. Help golfers refine their technique on the practice green by using full-size flagsticks.

[Read More](#)



Central Region

Don't throw a wrench in the gears of daily course preparations by teeing off out of order. Making sure to begin play on the correct hole helps to prevent major slowdowns.

[Read More](#)



Southeast Region

With summer upon us, golf facilities in the Southeast are trimming trees and branches before the busy hurricane season arrives. This is beneficial for many reasons.

[Read More](#)

Editorial Staff

[Adam Moeller](#) Editor in Chief
[George Waters](#) Associate Editor
[Matthew Patalona](#) Creative Director
[Andrew Caron](#) Art Director

United States Golf Association
77 Liberty Corner Road
Liberty Corner, NJ 07938
908.234.2300

[Contact Us](#)

Stay Connected with the USGA



Important Links

[USGA Privacy Policy](#)
[USGA Green Section Home Page](#)
[USGA Staff Contact Information](#)
[Course Consulting Service Information](#)
[USGA Turfgrass and Environmental Research Online \(TERO\)](#)

©2019 by United States Golf Association®

[Policies for the Reuse of USGA Green Section Publications](#)

USGA Green Section publications are made available through the courtesy of the United States Golf Association (USGA®). The reuse of these materials is authorized only if the following conditions are met in their entirety. This policy applies to all Green Section publications, including articles, videos, presentations, and webcasts.

- 1) [Adherence to all components of our Conditions for Reuse policy.](#)
- 2) [Inclusion of the appropriate Reprint Permission Language.](#)
- 3) [Notification of your Intent To Reprint Content.](#)

The USGA Green Section Record (ISSN 2156-5813) is published twice monthly via electronic mail by the United States Golf Association®.