

## Regional Updates



### West Region

The golf club industry does a great job of displaying their wares annually by letting players test drive their newest models. You can do the same with your maintenance practices.

[Read More](#)



### Northeast Region

Golf courses recovering from winter injury are beginning to see a speck of light at the end of a long, dark tunnel. However, the road to recovery is not over yet for many.

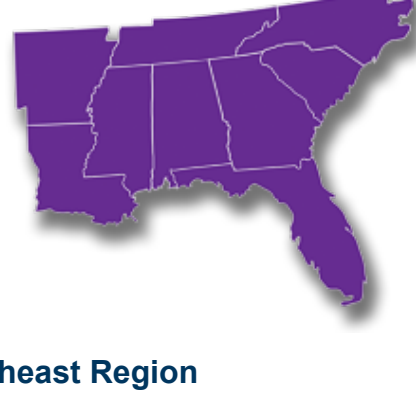
[Read More](#)



### Central Region

The combination of low mowing heights, grooved front rollers and soft, soggy putting greens can be a recipe for significant turf stress - especially along the cleanup pass.

[Read More](#)



### Southeast Region

Deep-time aeration is a commonly deferred maintenance practice, but this important cultivation practice is well worth the time and money to help keep golfers and turf happy.

[Read More](#)

## Thank You, Jim Skorulski



Jim Skorulski, USGA agronomist, will leave the USGA effective June 30, 2019, but he leaves golf in the Northeast Region far better than he found it. For more than 30 years, Jim worked closely with superintendents and course officials to overcome all types of challenges and improve their golf courses. Jim joined the Green Section in 1989 working at the USGA's New Jersey headquarters before settling in New England in the early 1990s. He made more than 3,000 visits through the USGA Course Consulting Service and developed many articles and educational presentations. His agronomic contributions to golf facilities were further amplified by his leadership in promoting golf course environmental outreach, integrated pest management and helping courses become more sustainable. His commitment and commonsense approach to golf course management were welcomed and appreciated by all. USGA agronomists Paul Jacobs, Elliott Dowling and Adam Moeller will continue providing golf courses across the Northeast Region with top-quality expertise and golf course management consulting.



### In Case You Missed It

Using grasses that deliver quality playing conditions with fewer inputs is a key consideration for all golf facilities. In many areas, zoysiagrass provides an excellent alternative to other grasses. Review the June 7, 2019, issue of the USGA *Green Section Record* for a detailed guide to managing zoysiagrass fairways that can help you get the most from this increasingly popular turf species.

[Read This Issue](#)

[Browse All Past Issues](#)



### Coming Up Next Issue

Weed encroachment is possible on every golf course regardless of grass type, weather or budget. Even with a sound weed management program, breakthrough is almost inevitable. Kyllinga and nutsedge can be especially difficult to manage and the July 5, 2019, issue of the USGA *Green Section Record* will offer valuable insights and strategies that can help you manage these frustrating weeds.

## Latest From Course Care

### Course Care Video



#### Championship Conditions Vs. Daily Playing Conditions

Championship conditions may look good on television, but what we don't see is all the preparation and resources required to create them. For most golf courses, championship playing conditions are not achievable, sustainable or desirable on a daily basis.

[Watch Video](#)

### Turf Tip

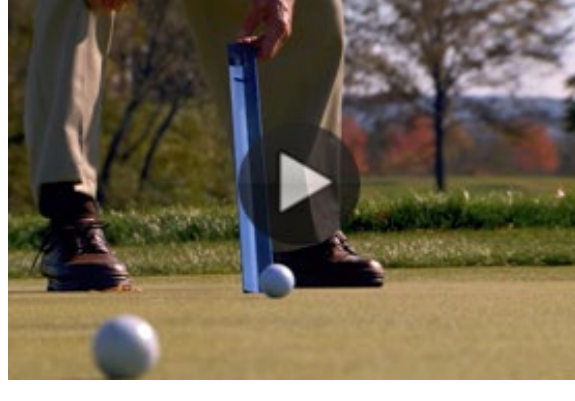


#### Create A Roller Guide To Reduce Wear Injury

Wear problems on putting greens are common and can be caused by intensive mowing and rolling. Developing an easy-to-use guide for roller operators that gives them information about rolling direction and areas to avoid can improve communication and playing conditions.

[Read More](#)

### Turf Minutes Video



#### Turf Minutes: Stimpmeter 101

Some mistakenly believe that the USGA Stimpmeter is a tool designed to help achieve faster greens, and that faster means better. In fact, the primary function of a Stimpmeter is to help superintendents achieve consistent and appropriate green speeds throughout the course.

[Watch Video](#)

### Fore The Golfer



#### Po-Uh-An-You-Uh Explained

We hear *Poa annua* mispronounced in many different ways during golf telecasts, and this common putting green turf is often cast in a negative light. However, when managed properly and grown in the right environment, *Poa* can provide a fantastic putting surface.

[Read More](#)

## Course Consulting Service

Find out how a Course Consulting Service visit can help you improve course conditions and reduce

[LEARN MORE](#)

## Editorial Staff

[Adam Moeller](#) Editor in Chief

[George Waters](#) Associate Editor

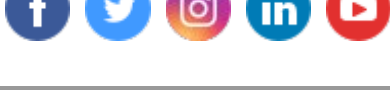
[Matthew Patalona](#) Creative Director

[Andrew Caron](#) Art Director

United States Golf Association  
77 Liberty Corner Road  
Liberty Corner, NJ 07938  
908.234.2300

[Contact Us](#)

## Stay Connected with the USGA



## Important Links

[USGA Privacy Policy](#)  
[USGA Green Section Home Page](#)  
[USGA Staff Contact Information](#)  
[Course Consulting Service Information](#)  
[USGA Turfgrass and Environmental Research Online \(TERO\)](#)

©2019 by United States Golf Association®

[Policies for the Reuse of USGA Green Section Publications](#)

USGA Green Section publications are made available through the courtesy of the United States Golf Association (USGA®). The reuse of these materials is authorized only if the following conditions are met in their entirety. This policy applies to all Green Section publications, including articles, videos, presentations, and webcasts.

1) [Adherence to all components of our Conditions for Reuse policy.](#)

2) [Inclusion of the appropriate Reprint Permission Language.](#)

3) [Notification of your Intent To Reprint Content.](#)

The USGA Green Section Record (ISSN 2156-5813) is published twice monthly via electronic mail by the United States Golf Association®.