

Successful Putting Green Construction Starts With Planning

By Patrick O'Brien and David A. Oatis



putting greens and their surrounding areas.

Nothing impacts the game of golf and the enjoyment of those who play it more than putting greens. Although they typically only represent 2 percent of a golf course's acreage, it is not uncommon for golfers to play 40 percent of their shots from putting greens.

The USGA Recommendations for a Method of Putting Green Construction have helped golf facilities achieve excellent putting surfaces for more than 50 years. This article highlights nine often overlooked tips to optimize the performance of new

[Read More](#)

Multimedia Content

Course Care Video

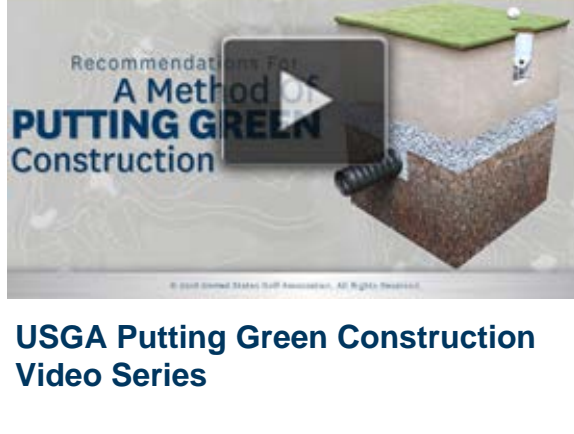


Fore The Golfer: Putting Greens Have Speed Limits Too

Putting green speeds have long been a hot topic. While there are many opinions on the subject, one thing is for certain – faster doesn't necessarily mean better. Every putting green has an architectural speed limit. When putting greens get too fast, hole locations intended by the original design can become unplayable. Here are a few things to consider the next time you think about green speed.

[Learn More](#)

Course Care Videos

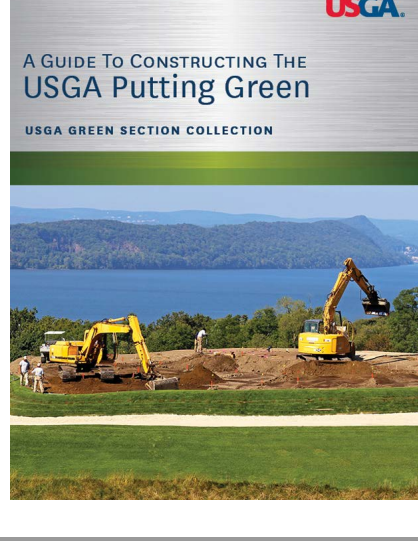


USGA Putting Green Construction Video Series

The USGA Recommendations for a Method of Putting Green Construction have guided successful putting green construction projects for more than 50 years. But keeping track of all the steps can get a little overwhelming. This new 10-part video series sheds some light on the putting green construction process, highlighting each of the critical steps and offering some helpful tips along the way.

[Learn More](#)

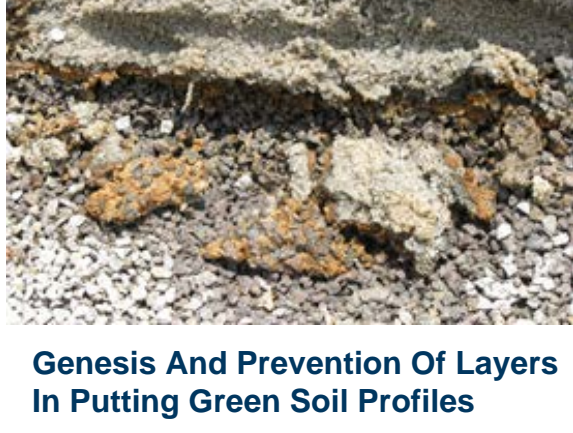
Green Section Collection: Putting Green Construction Recommendations



These interactive digital collections include additional supporting articles, a photo gallery and videos that provide relevant information on the primary subject. The collections can be viewed online in a user-friendly digital magazine format, saved as a PDF or printed.

[View Collection](#)

Research You Should Know



Genesis And Prevention Of Layers In Putting Green Soil Profiles

An interesting phenomenon has been observed in putting green rootzones: layers of clay or iron forming deep within the rootzone profile. To better understand these layers and their potential implications on putting green performance, the USGA funded research at the University of Wisconsin. While the research is ongoing, here are some preliminary results.

[Read More](#)

Fore The Golfer



When Is A New Putting Green Ready For Play?

Putting green construction projects take time, but just how much time depends a wide range of factors. Although it is difficult to determine an exact opening date for new greens at the onset of construction, evaluating these factors will help you narrow down a rough timeline. Here's how the factors add up, just remember that a lot depends on Mother Nature.

[Read More](#)



A free way to *counton* having fun!

April 21 - May 13

Earth Day to World Migratory Bird Day

Registration is now open for Audubon International's fourth annual BioBlitz, an international species-counting competition designed to help you showcase the environmental value of the habitats on your golf course. The event is open to any golf course worldwide.

Hold your event on any day during BioBlitz and invite golfers and their families, youth groups, community members, and local environmental experts to count plant and animal species on your course. Register today to receive your BioBlitz toolkit – it has all the information needed to plan your event and engage the community around your course.

BioBlitz 2018 is sponsored by



[Register](#)

Regional Updates



West Region

Looking to improve the playing conditions and turf quality of overseeded approaches? Low-cut areas around putting greens can improve bermudagrass transition in spring and create a variety of shot options.

[Read More](#)



Northeast Region

Abnormally warm temperatures across the Northeast remind us that spring is near. If conditions allow, now is a great time to consider performing these tasks to get a head start and set the stage for a great season.

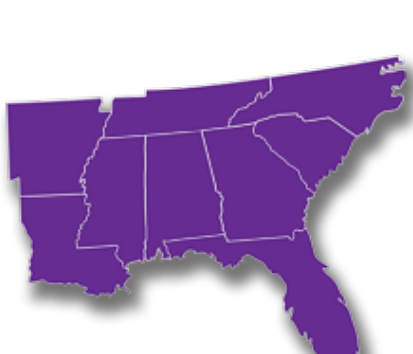
[Read More](#)



Central Region

How often do you test for irrigation water quality and soil fertility? Spending a little time and a few hundred dollars for some testing has the potential to save several thousand dollars by preventing turf injury and eliminating unnecessary inputs.

[Read More](#)



Southeast Region

Several chronic stress factors cause slow turf decline. But a slow decline can eventually lead to rapid turf loss when other stresses come into play. When it comes to evaluating turf stress, it helps to have another set of eyes.

[Read More](#)

Course Consulting Service

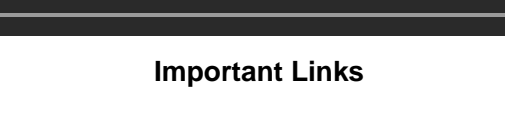
Find out how a Course Consulting Service visit can help you improve course conditions and reduce costs.

[LEARN MORE](#) ➔

United States Golf Association
77 Liberty Corner Road
Liberty Corner, NJ 07938
908.234.2300

[Contact Us](#)

Stay Connected with the USGA



Important Links

- [USGA Privacy Policy](#)
- [USGA Green Section Home Page](#)
- [USGA Staff Contact Information](#)
- [Course Consulting Service Information](#)
- [USGA Turfgrass and Environmental Research Online \(TERO\)](#)

©2018 by United States Golf Association®

[Policies for the Reuse of USGA Green Section Publications](#)

USGA Green Section publications are made available through the courtesy of the United States Golf Association (USGA®). The reuse of these materials is authorized only if the following conditions are met in their entirety. This policy applies to all Green Section publications, including articles, videos, presentations, and webcasts.

- [1\) Adherence to all components of our Conditions for Reuse policy.](#)
- [2\) Inclusion of the appropriate Reprint Permission Language.](#)
- [3\) Notification of your Intent To Reprint Content.](#)

The USGA Green Section Record (ISSN 2156-5813) is published twice monthly via electronic mail by the United States Golf Association®.