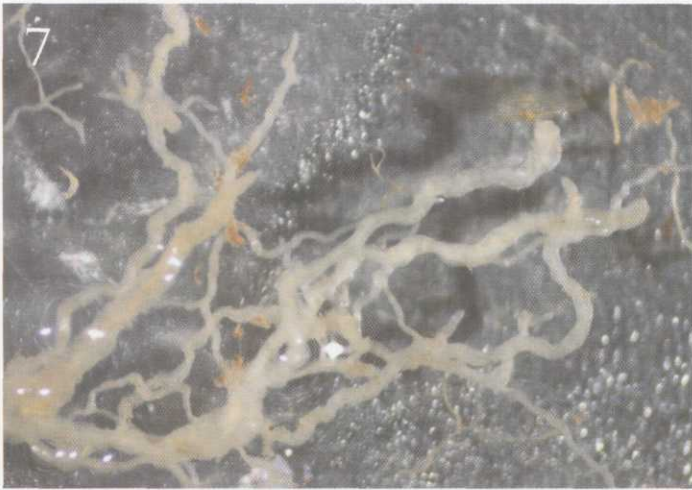


Contents

July-August 2005 Volume 43, Number 4



1 Phosphorus Under Fire
Will the increasing number of fertilizer restrictions affect your maintenance program?
BY BOB VAVREK

7 Defining the Nature of Creeping Bentgrass Root Diseases
Research directed toward accurate diagnosis and management of putting green diseases.
BY LANE P. TREDWAY
AND JAMES P. KERNS

10 Improving Dollar-Spot Resistance in Creeping Bentgrass
Rutgers University scientists investigate using colonial bentgrasses to incorporate dollar-spot resistance into creeping bentgrass.
BY FAITH C. BELANGER,
STACY A. BONOS, AND
WILLIAM A. MEYER



12 Building a New Driving Range Tee? Super Size It!
Driving ranges once were an afterthought, but practice has become popular, and courses are responding with improved facilities.
BY DAVID A. OATIS

16 New Tools for the Golf Course Superintendent
A practical user's guide to the sulfonyleurea herbicides.
BY RENEE KEESE, DAVID SPAK,
AND CHRISTIAN SAIN

19 Managing Runoff with Constructed Wetlands
Purdue University research demonstrates how constructed wetlands can be used to limit runoff.
BY Z. J. REICHER,
E. A. KOHLER, V. L. POOLE,
AND R. F. TURCO

25 Still on Top
Ten years after participating in the Audubon Cooperative Sanctuary Program.
BY JEAN MACKAY
AND SHAWN WILLIAMS

27 News Notes

28 Don't Lose the Feeling
Make sure high-tech gadgets and administrative duties don't get in the way of growing grass.
BY JIM SKORULSKI

30 Turf Twisters



USGA President
Fred S. Ridley

Green Section Committee Chairman
Bruce C. Richards
12202 NE 31st Place
Bellevue, WA 98005

Executive Director
David B. Fay

Editor
James T. Snow

Associate Editor
Kimberly S. Erusha, Ph.D.

Director of Communications
Marty Parkes

Cover Photo

Excess weed and algae growth in ponds and lakes detracts from the overall appearance of the course.