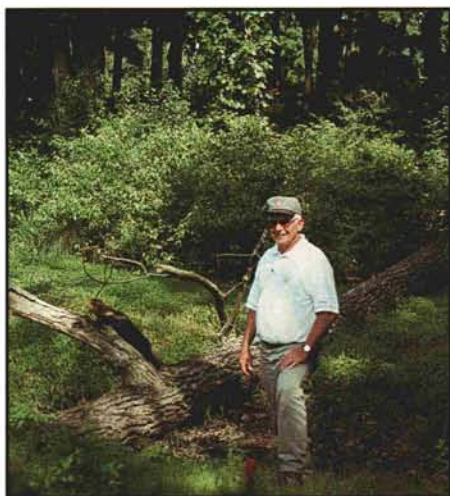
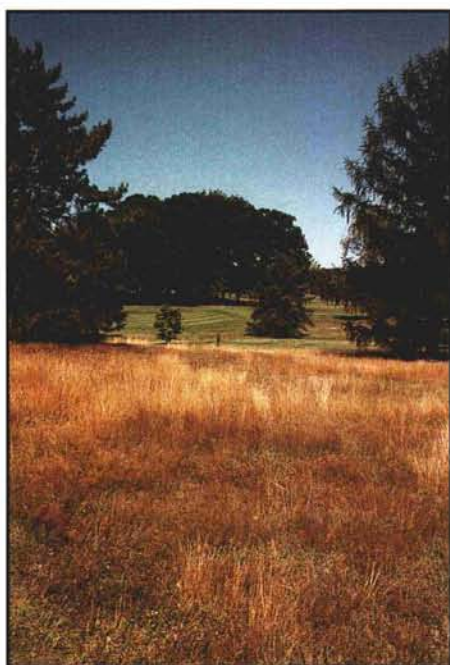


Cover Photo:  
*Bermudagrass "off-types" in putting  
surfaces affect aesthetics as well as  
ball roll and management practices.*



*Superintendent Steve Humphreys, Dutchess Country Club, Poughkeepsie, N.Y., understands the value of downed wood in the forest community. In out-of-play areas, downed trees are left where they lie to provide habitat, serve as nurse logs for new trees, cycle nutrients, and help hold moisture in humus and soil layers. See page 7.*



*Areas that were once mowed as rough are now left natural to provide valuable wildlife habitat and save man-hours for maintenance. See page 16.*

# USGA® GREEN SECTION **Record**

1

## **The Hybrid Bermudagrass Scene**

We're living in the best of times and the worst of times for bermudagrass.

*By John H. Foy*

5

## **Establishing An Intern Program**

A valuable activity that can benefit the student and your course.

*By George Hamilton*

7

## **Natural Areas**

Establishing natural areas on the golf course.

*By Matt Nelson*

12

## **Exploring the Use of Plant Growth Regulators to Reduce Winter Injury on Annual Bluegrass (*Poa annua* L.)**

Increasing energy reserves will reduce winterkill and enhance plant health.

*By Frank S. Rossi, Ph.D., and Emily J. Buelow*

16

## **Naturalizing: A Superintendent's Perspective**

Going natural can be a win-win situation, but it pays to follow good advice and start slowly.

*By Peter Salinetti*

18

## **Information Overload**

How many yardage markers do you really need on the golf course?

*By Patrick J. Gross*

20

## **News Notes**

22

## **Turf Twisters**