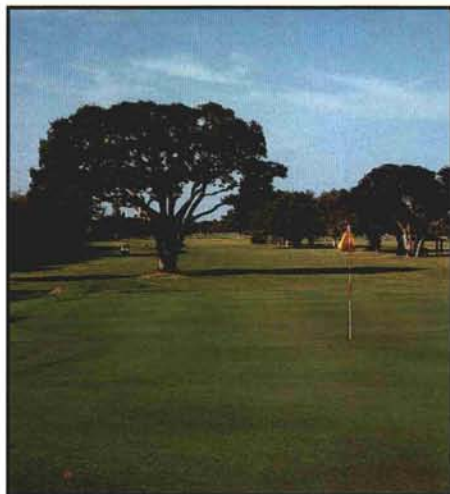
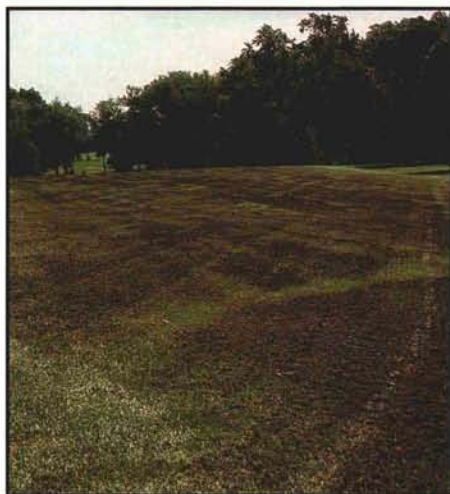


*Cover Photo:
Sand buildup after years
of golfers blasting out of
bunkers can be severe.*



Key trees can have an effect on USGA Course and Slope Ratings. See page 6.



The transition from perennial ryegrass to creeping bentgrass can be a challenge to golf course superintendents. See page 12.

USGA® GREEN SECTION **Record**

1

So, You Want to Renovate Your Golf Course?

There are hundreds of ways for course renovation programs to go awry. Here are a few tips to make your project a success.

By David A. Oatis

6

Set It Up Right!

Routine turf management and course setup influence USGA Course and Slope Ratings.

By Vic Cardace and Chris Hartwiger

8

Restoring The Past

A look at green restoration techniques.

By James E. Skorulski

11

As We Find Them

This article was written 69 years ago. It could have been written today.

12

The Transition from Perennial Ryegrass to Creeping Bentgrass Fairways for the Mid-Atlantic Region

A history of the conversion process.

By Peter H. Dernoeden, Ph.D.

16

Know When to Over-Irrigate

An easy way to monitor soil salinity.

By Paul H. Vermeulen

17

Links-Style Birding

Results of the 1997 Ryder Cup Birdwatching Championship.

By Ron Dodson

19

A Waste of Time

Save money with this tip to reduce mowing!

By Patrick M. O'Brien

20

News Notes

22

Turf Twisters