

C. O. Pfeil.....	Memphis Country Club
James D. Standish, Jr.....	Lochmoor Club
William E. Stauffer.....	Audubon Golf Club
Henry H. Wilder.....	The Country Club
Alan D. Wilson.....	Merion Cricket Club

Six Sectional, State or recognized Golf Associations are on the ticket as follows:

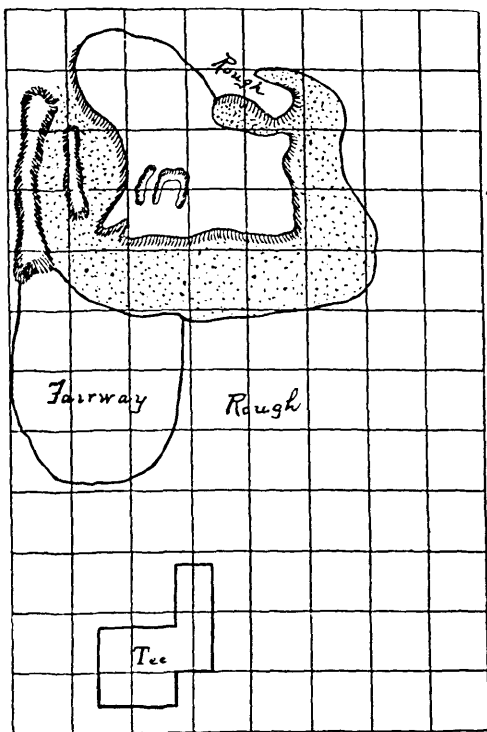
William C. Fownes, Jr.....	Pennsylvania Golf Association
Robert A. Gardner.....	Chicago District Golf Association
Roger D. Lapham.....	California Golf Association
John R. Lemist.....	Trans-Mississippi Golf Association
Thomas B. Paine.....	Southern Golf Association
C. O. Pfeil.....	Western Golf Association
James D. Standish, Jr.....	Public Links Golf Association

Nominating Committee, 1925

Howard F. Whitney, Chairman.....	Nassau Country Club
W. A. Alexander.....	Old Elm Club
Rodney W. Brown.....	The Country Club
H. Chandler Egan.....	Waverly Country Club
John Reid.....	Racine Country Club

Instructive Golf Holes VI

No. 6. National Golf Links of America, Southampton, Long Island. 120 Yards
(95 Yards to 125 Yards.)

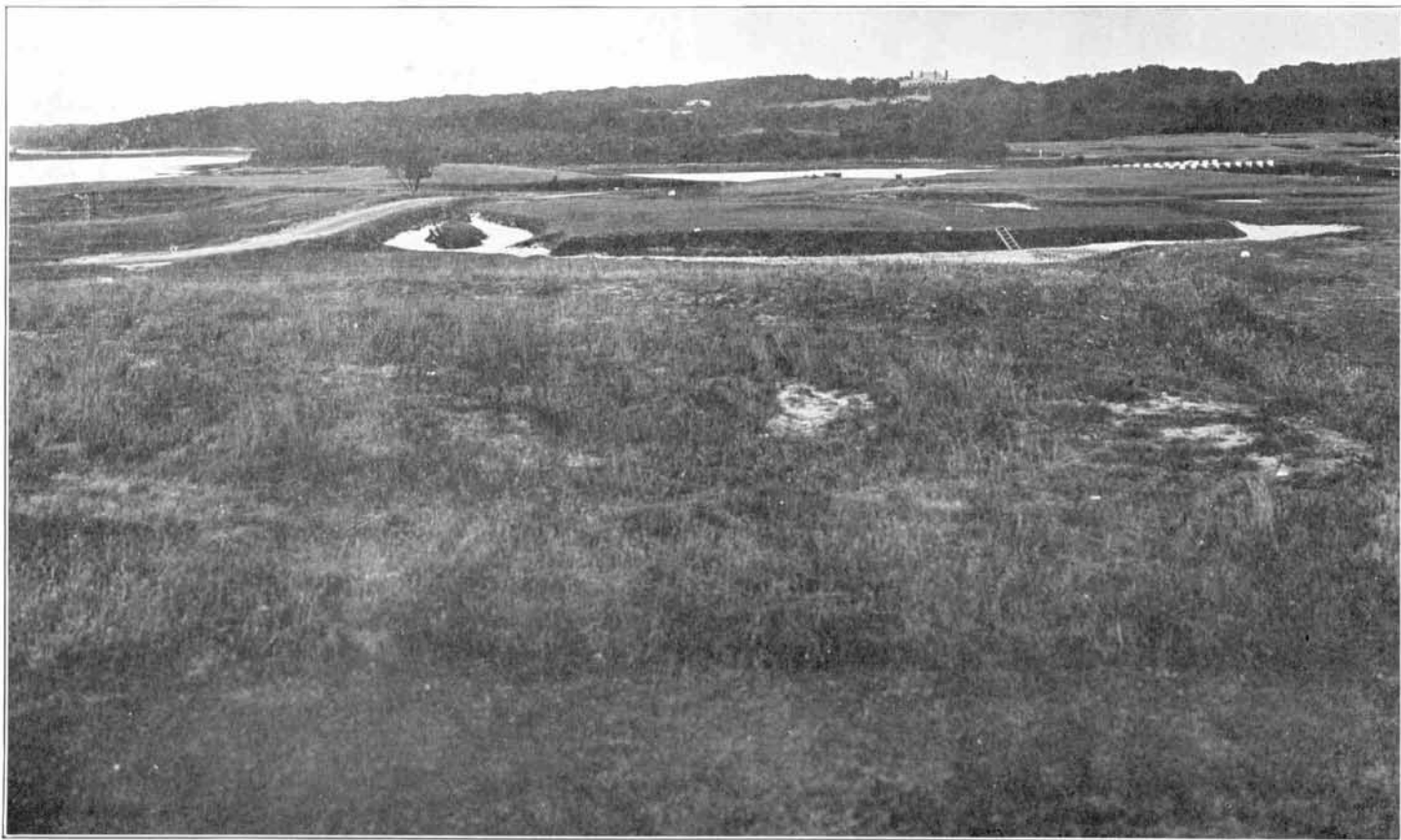


This interesting hole runs due east, and the photograph shows the residence of the designer, Mr. Charles B. Macdonald, in the distance on the ridge. The teeing ground is about 15 feet higher than the putting sward and large enough to permit considerable variation in the length of the hole. Originally the putting sward was much smaller, but extensions were added on the right and at the back. While the total area of the sward is large (approximately 10,000 square feet), the form is such that the shot from the tee must be well played to reach and hold. A small area of fairway to the left permits one to play the hole in two shots if he so chooses. The two elevations in the lower left corner were near the center of the original green, and when between the ball and the cup make the putt a trying one.

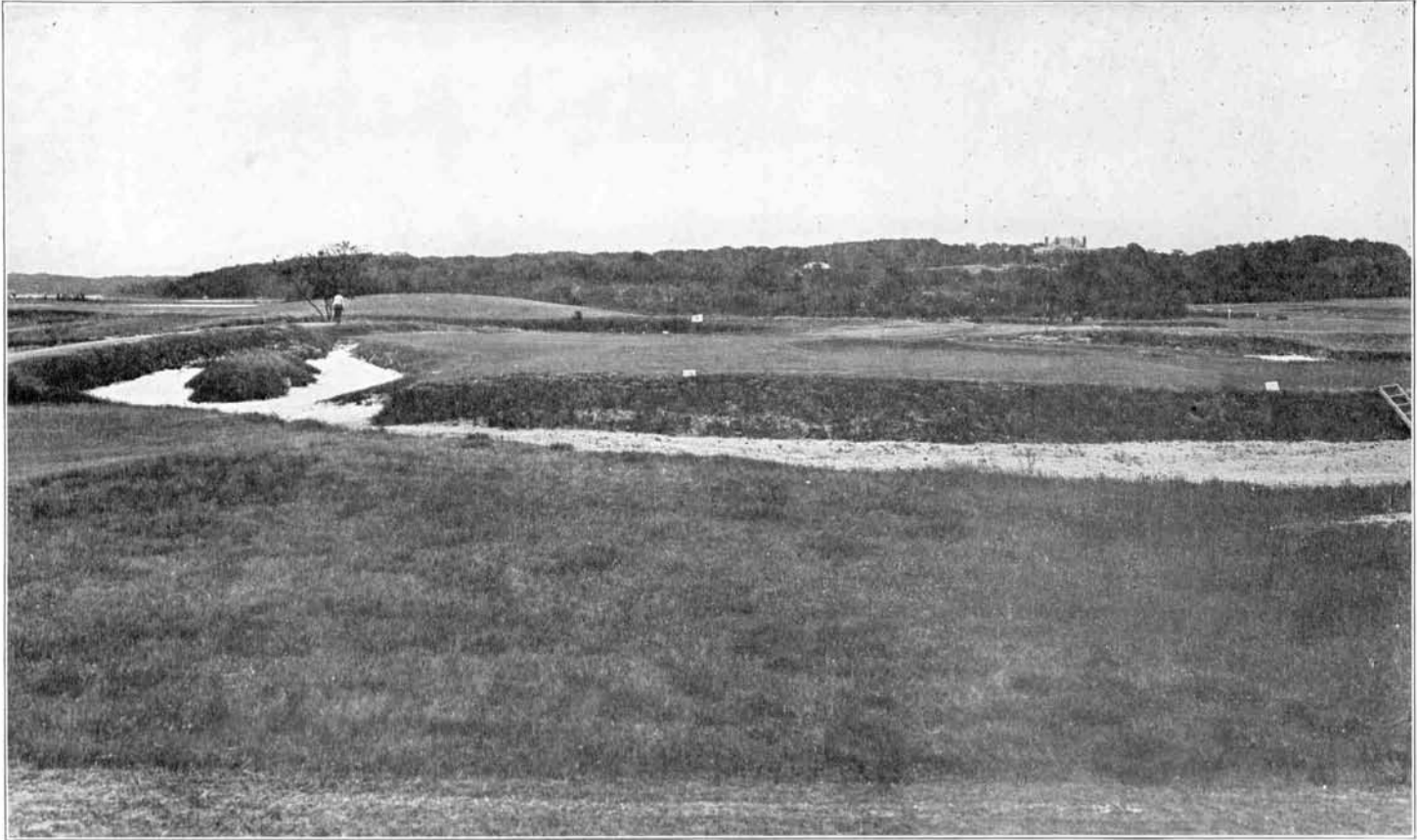
Dec. 15, 1923

UNITED STATES GOLF ASSOCIATION

305



Hole No. 6, National Golf Links of America. View from Tee



Hole No. 6, National Golf Links of America, Closeup View of Putting Green