

Question.—A and B are playing at match play, caddy carrying double. He takes the flag at the hole with both bags on shoulders. A plays ball from trap. Ball strikes caddy or bag, stopping on green near hole. Is this rub of green or penalty shot? If penalty, what does it consist of? Wire answer.

Answer.—This is rub of the green. No penalty. Rules cover only properly constituted match where each player has own caddy.

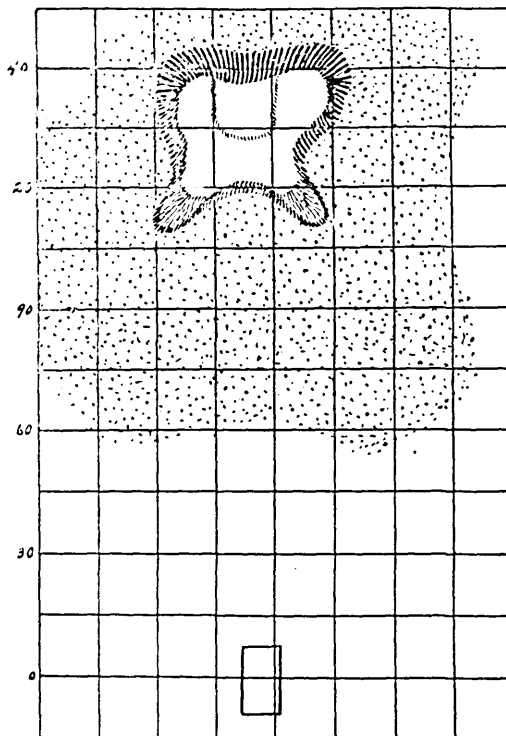
Question.—Could a bottle be removed from a hazard if the ball lies against it? Under play in hazards, any obstruction mentioned in Rule 11 may be removed. This rule mentions several things and then says any similar obstruction may be removed. It mentions "a box," probably meaning at that time a lunch box. Does not the rule mean anything brought there, not accumulating from the course, such as the obstructions mentioned, sticks, leaves, stones, etc., being things naturally lying about from the course not movable?

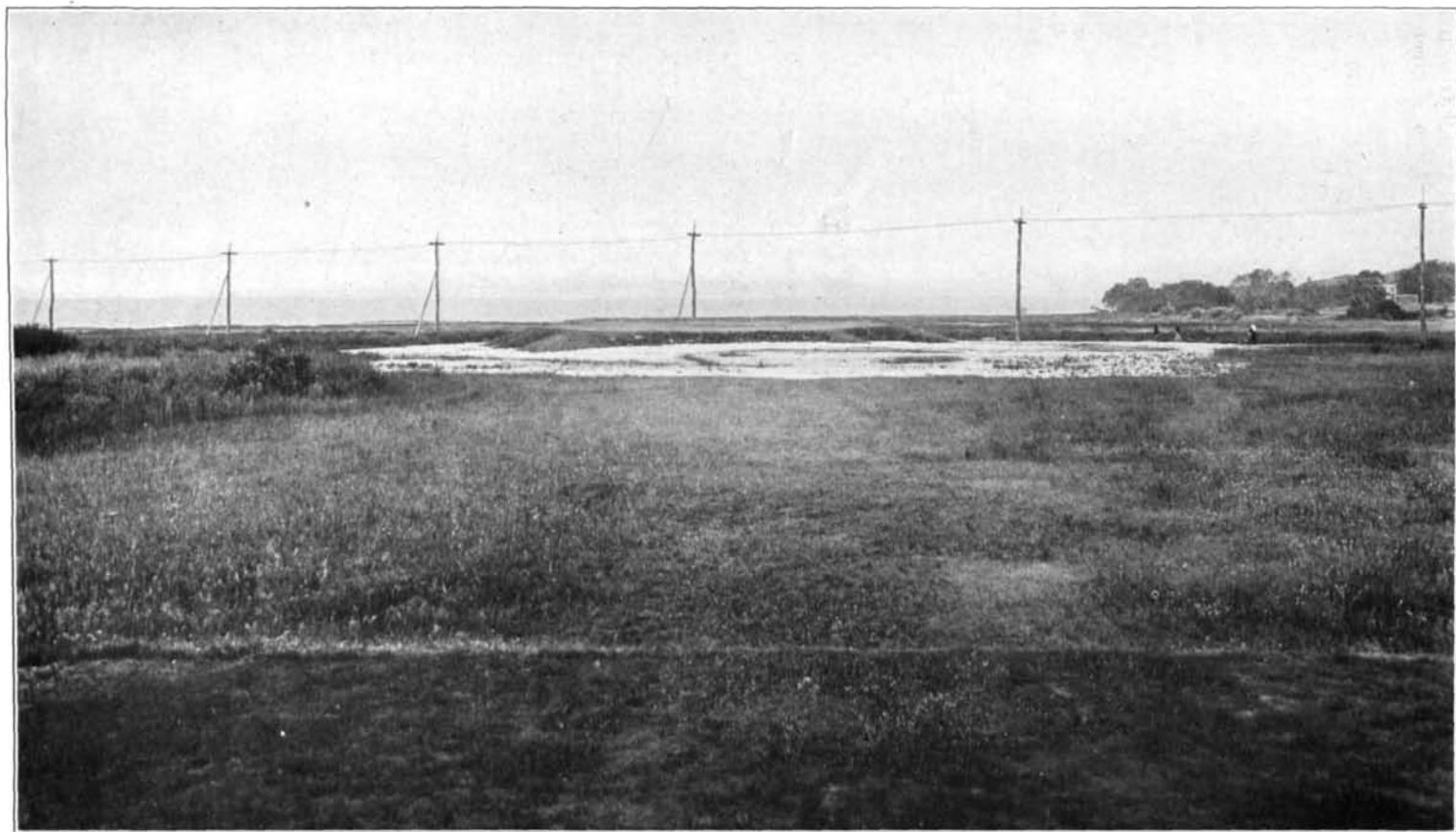
Answer.—The decision of the Rules Committee of the United States Golf Association is as follows: "In our opinion the bottle you refer to can not be classed as 'similar obstructions' unless it contained oil or was in some way connected with the upkeep of the course. Therefore the bottle in the hazard such as you describe could not be removed without penalty."

Instructive Golf Holes V

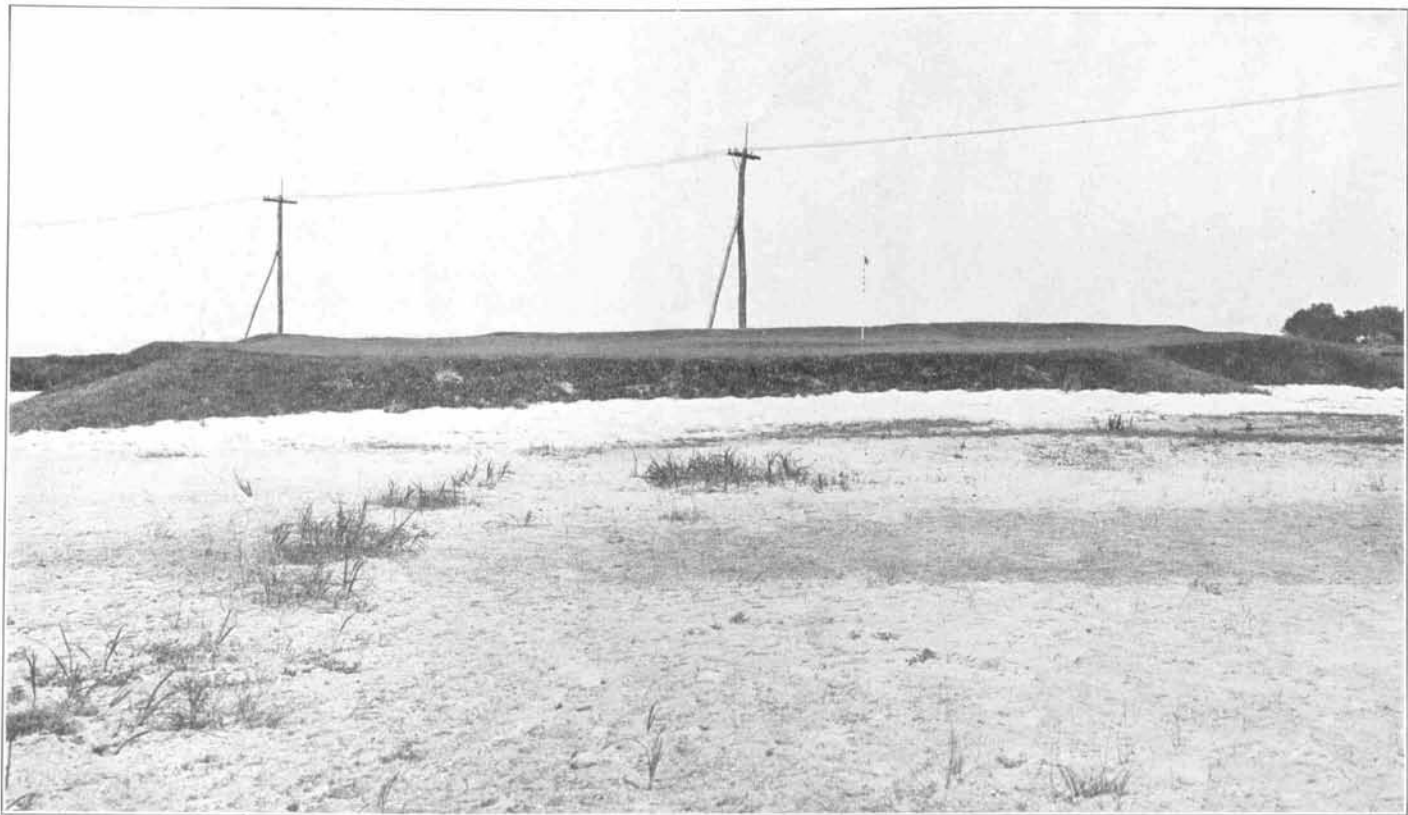
No. 17, Rhode Island Country Club, West Barrington, R. I. 130 to 140 Yards

A decidedly impressive hole of very simple character, built on a level meadow near the sea-shore. Essentially the hole consists merely of a tee and of a raised island green, the latter surrounded by a wide expanse of sand. To realize the effectiveness of a large "sand waste" one has only to see this hole. The direction is southwest with the sea in the background. The putting sward measures about 4,500 square feet. It is an elevated plateau, rising $3\frac{1}{2}$ feet above the sand in front and $5\frac{1}{2}$ feet in the rear, so that it slopes gently to the approach. The central part of the back half on the sward, indicated by the faint line, is a plateau about 1 foot higher than the remainder. The unsightly telegraph line in the background is to be removed.





Hole No. 17, Rhode Island Country Club. View from tee



Hole No. 17, Rhode Island Country Club. Close-up view of putting green