

**New Member Clubs of the Green Section.**—San Andres Golf Club, Buenos Aires, Argentina. Spring Brook Country Club, Morristown, N. J. Walloon Lake Country Club, Walloon Lake, Mich. Urbana Country Club, Urbana, Ohio. Tacoma Country and Golf Club, Tacoma, Wash. Tualatin Country Club, Portland, Oregon. Willow Brook Country Club, Tyler, Texas.

**New Member Clubs of the United States Golf Association.**—ACTIVE.—Olympic Club, San Francisco; Antlers Club, Amsterdam, N. Y.; Briergate Golf Club, Deerfield, Ill.; North Hills Country Club, Normandy, Mo.; Newton Country Club, Newton, Iowa; Utica Golf and Country Club, New York Mills, N. Y.; Lake Merced Golf and Country Club, San Francisco; Rancho Golf Club, Los Angeles.

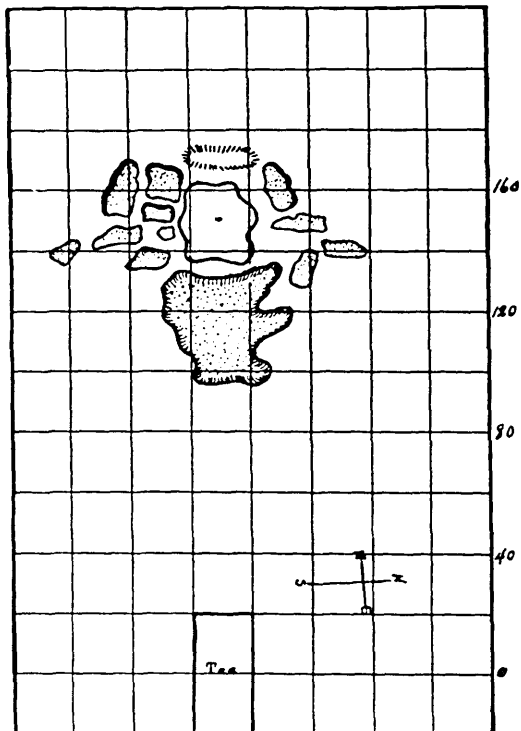
ALLIED.—Androscooggin Valley Country Club, Shelburne, N. H.; Quincy Country Club, Quincy, Ill.; Needham Golf Club, Needham, Mass.; Dover Bay Country Club, Rocky River, Ohio; Briarelliff Country Club, Briarelliff Manor, N. Y.; Michiwaukee Golf Club, Milwaukee.

Volume I of "The Bulletin" (1921) has been reprinted and may be obtained in one cover for \$2.25.

## Instructive Golf Holes IV

No. 4. Hollywood Golf Club, Deal, New Jersey. 130 to 165 Yards

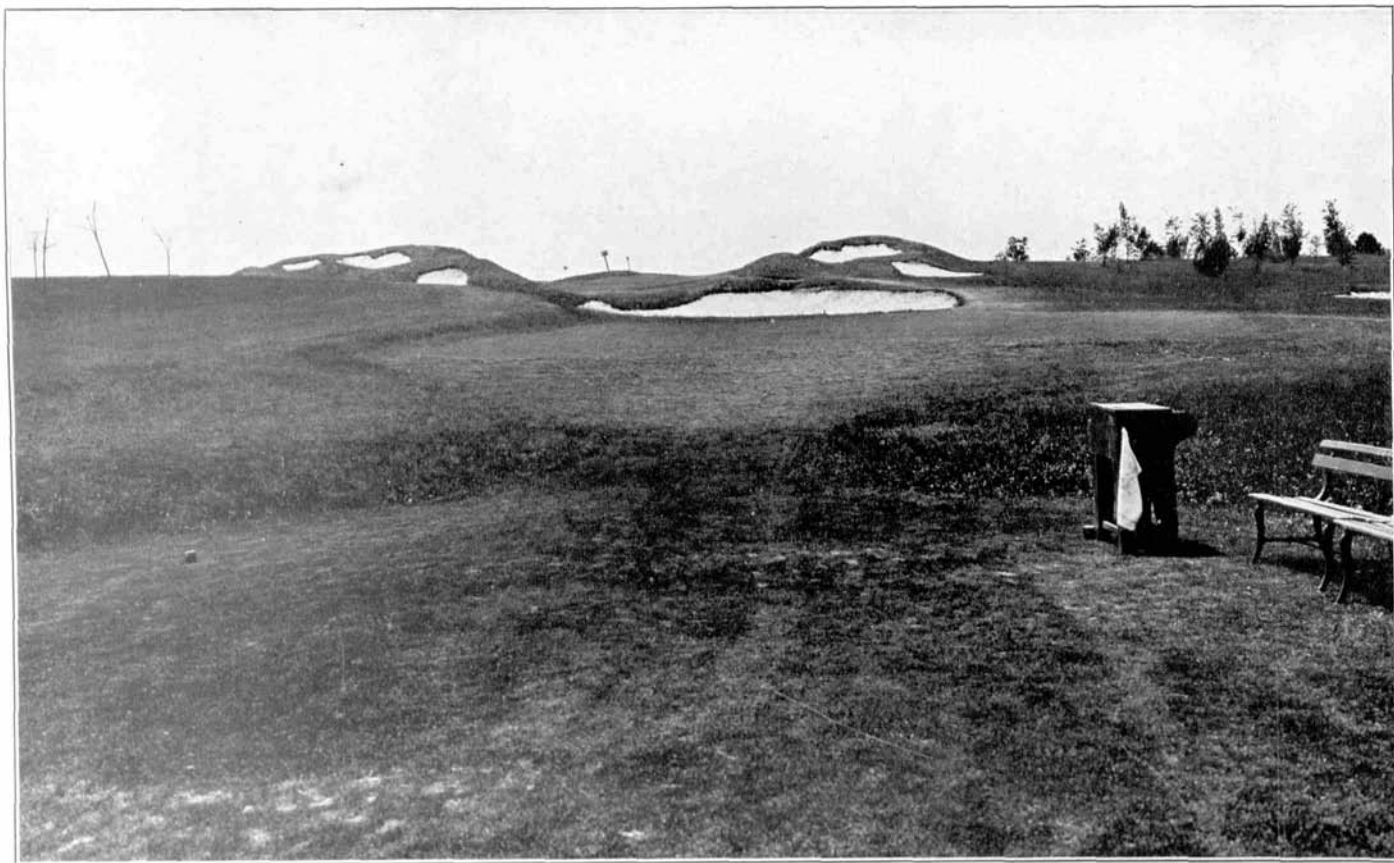
A one-shot hole of striking character, the length of which can be varied from 130 to 165 yards. Even at the shortest length it is a trying shot for the average golfer. The green is nestled between two large mounds in the face of which are sand bunkers, and the mounds themselves are so shaped and so rough that there is practically no chance of a ball hitting the mounds to be deflected to the green. Behind the mounds on each side are other bunkers. The most impressive feature is the huge sand-pit in front of the green, which instils ample "mental hazard" in the player. The putting green is about 4,500 square feet in area, approximately 60 by 75 feet, and about 15 feet higher than the tee.



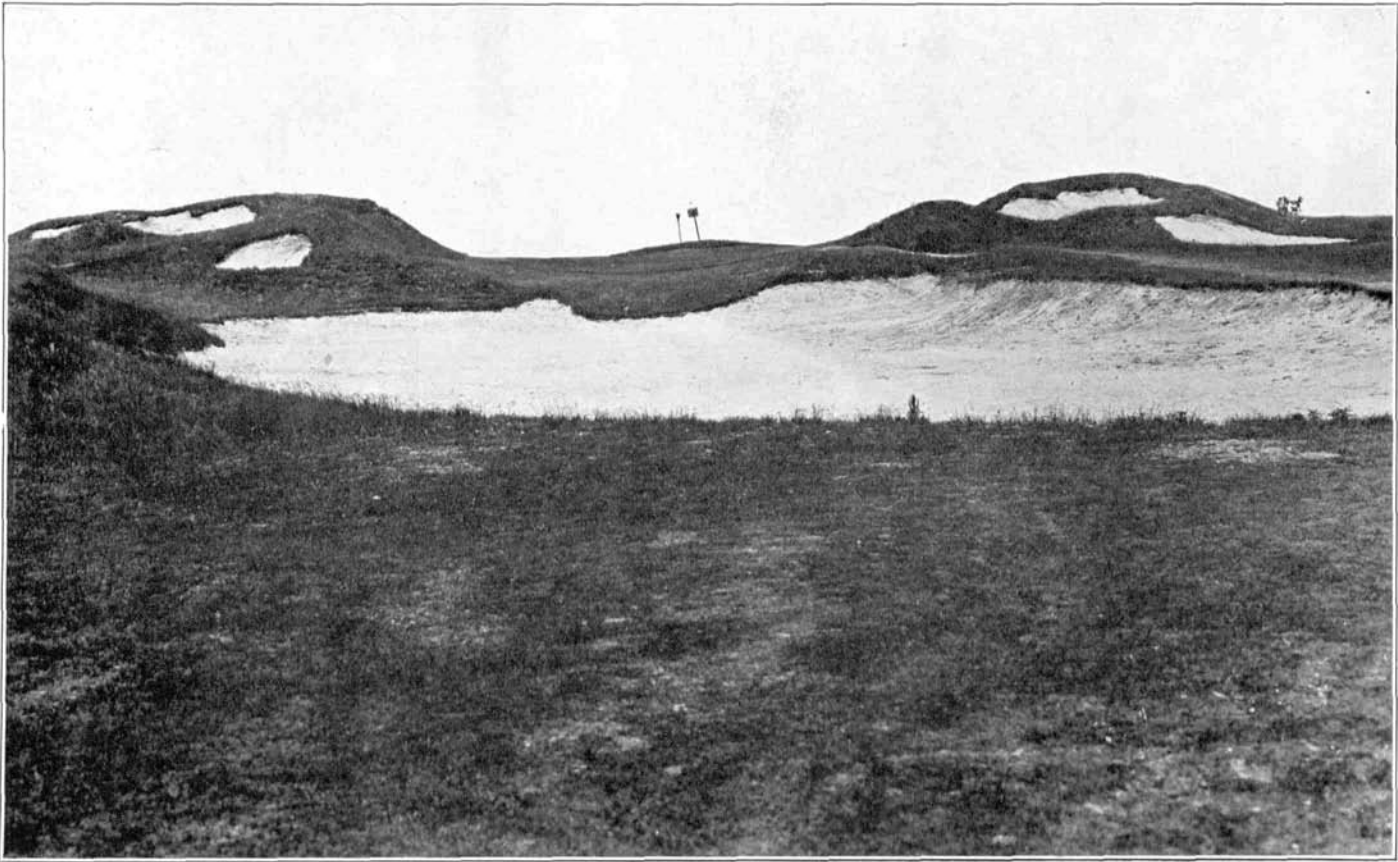
Oct. 22, 1923

UNITED STATES GOLF ASSOCIATION

271



Hole No. 4, Hollywood. View from Tee.



Hole No. 4, Hollywood. Close-up View of Putting Green.