

New Member Clubs of the Green Section.—Mr. H. J. Lutecher Stark's Private Course, Orange, Texas; Kankakee (Ill.) Country Club; Briareliff Country Club, Briareliff Manor, N. Y.; Ridgewood Country Club, Danbury, Conn.; Coldwater (Mich.) Country Club.

New Member Clubs of the United States Golf Association.—Clubs recently elected to the active class include the following: Maplewood (N.J.) Country Club; Marion (Ohio) Country Club; Old Country Club, Flushing, L. I., N. Y.; Rockford (Ill.) Country Club; Silver Lake (Ohio) Country Club.

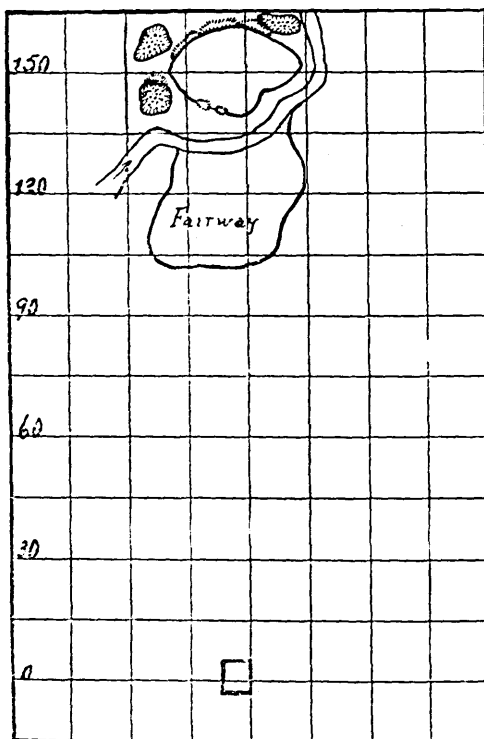
Clubs recently elected to the allied class include the following: Acacia Country Club, South Euclid, Ohio; Bellport (N.Y.) Country Club; Coldwater (Mich.) Country Club; Forest Park Country Club, Adams, Mass.; Harrisburg Park Golf Club, Harrisburg, Pa.; Hovenkoph Country Club, Suffern, N. Y.; Mason City (Ia.) Country Club; Reservation Golf Club, Mattapoissett, Mass.; Rivercrest Country Club, Fort Worth, Texas; Kettering Golf Club, Defiance, Ohio.

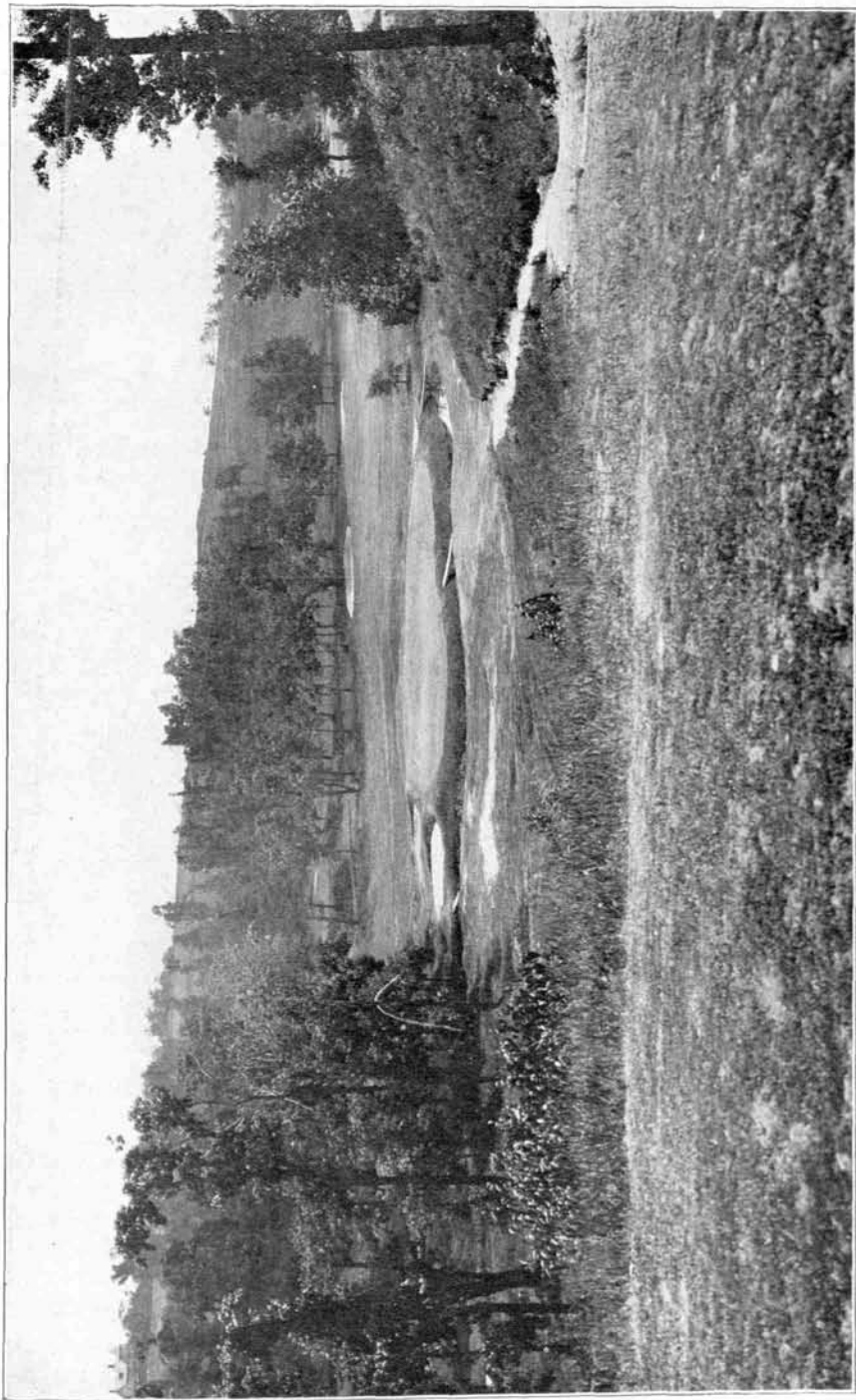
The Country Club of Rochester, and the Fresh Meadow Country Club of Jamaica, L. I., were transferred from allied to active membership.

Instructive Golf Holes III.

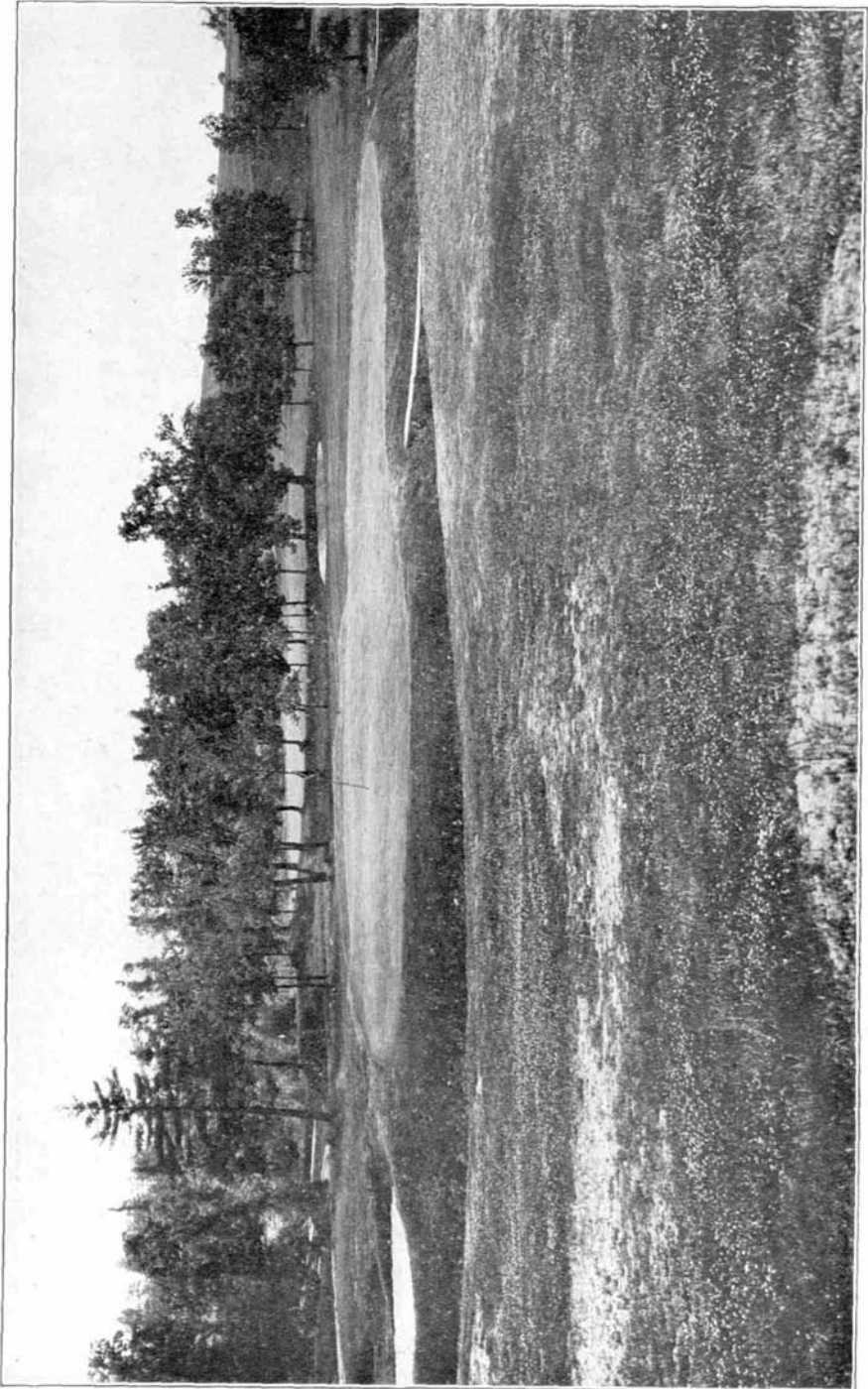
No. 6, Brae-Burn Country Club, West Newton, Massachusetts, 150 yards.

A tee high up on a hillside, a brook 40 feet below in a valley, a lovely green of velvet bent in an ox-bow bend of the brook, a background of beautiful trees—these are the outstanding features of Brae-Burn's number 6 hole. The brook is about 8 feet broad and the level of the green approximately 10 feet above the water level. It is safest, if one has driven into the brook, to drop the ball back on the fairway. The green is fairly large, about 6,000 square feet, measuring 96 feet on its long diameter and 80 feet on its short diameter. The back of the green is four or five feet higher than the rough behind.





Hole No. 6, Brae-Burn. View from tee.



Hole No. 6, Brae-Burn. Close-up view of putting green.