

manent turf for any reason is in poor condition. It is indeed barely possible that on this northern course with light sandy soil and long hard winters it may prove better to renew the greens each spring in the way described, much as the greens are replanted each fall on many of the sandy courses in Florida.

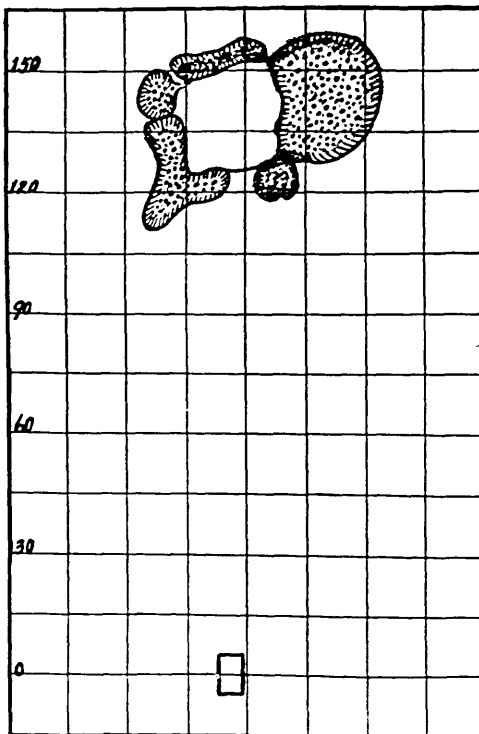
A surprising and puzzling thing was that by fall volunteer white clover, not present in the old greens or fairways, began to appear in the greens to a considerable extent and by frost time was abundant. Five years earlier there had been considerable white clover in the fairways and a little in the greens. This had become less and less until, at the time the new work on the greens was begun, it has almost entirely disappeared. Did the constant watering cause old and long-dormant seed to sprout?

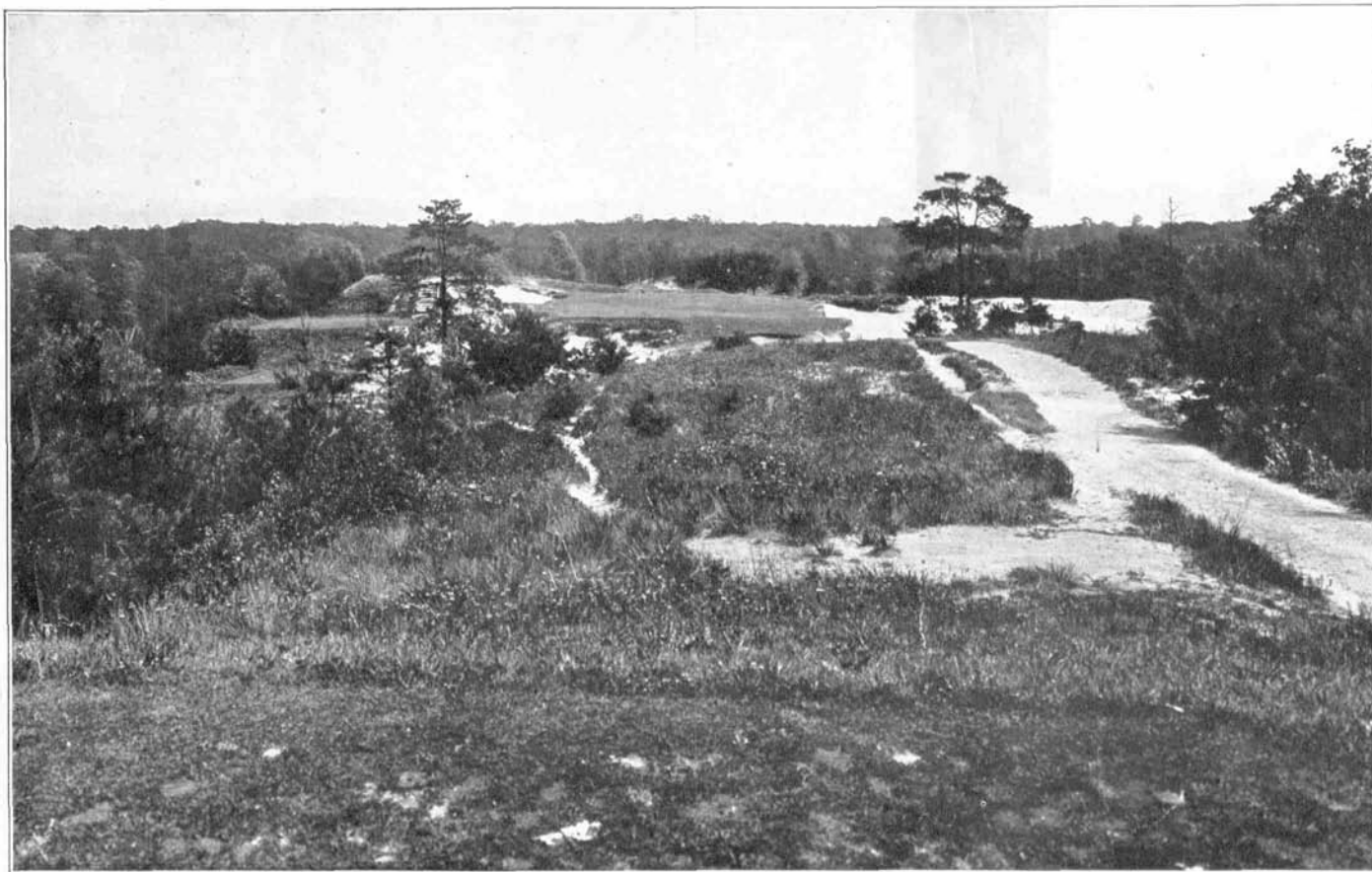
Construction of Tees.—There is a serious question as to whether players should be “coddled” by having perfectly flat tees prepared for them. This is often expensive and usually unnatural in appearance. Is it not better and more economical to select a fairly large and level area and keep that reasonably smooth by top-dressing and rolling and have ample spaces between tee markers and leave each player select a fit place to drive from? Is that not better than smaller but unnatural-looking tees? A large tee is to be preferred to a series of small ones, though it is good practice to keep a set of tees in reserve for tournaments where the length of hole permits the construction of a large tee for ordinary play a little short of the greatest length of the hole.

Instructive Golf Holes II

No. 10, Pine Valley Golf Club, Clementon, N. J. 134 yards.

The hole here illustrated and described is one that is designed to inspire fear in the heart of the player on the tee. The wide expanses of sand bunkers almost completely surrounding the green make the latter appear a small target. In reality the green is unusually large for a hole of this length, measuring as it does 6,500 square feet, approximately 70 feet wide and 95 feet deep. The tee is perhaps 15 feet higher than the green, the land in the middle between the two about 15 feet lower than the green and covered with rough grass that does not look inviting. The “mental hazard” of this hole is exceptionally great, even if the green is unusually large.





Hole No. 10, Pine Valley. View from tee.



Hole No. 10, Pine Valley. Close-up view of putting green.