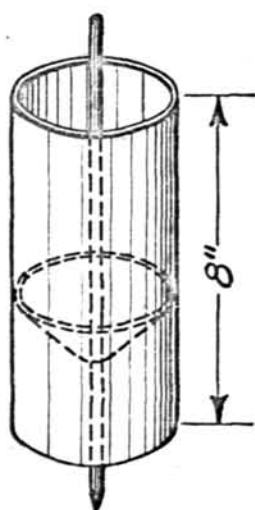


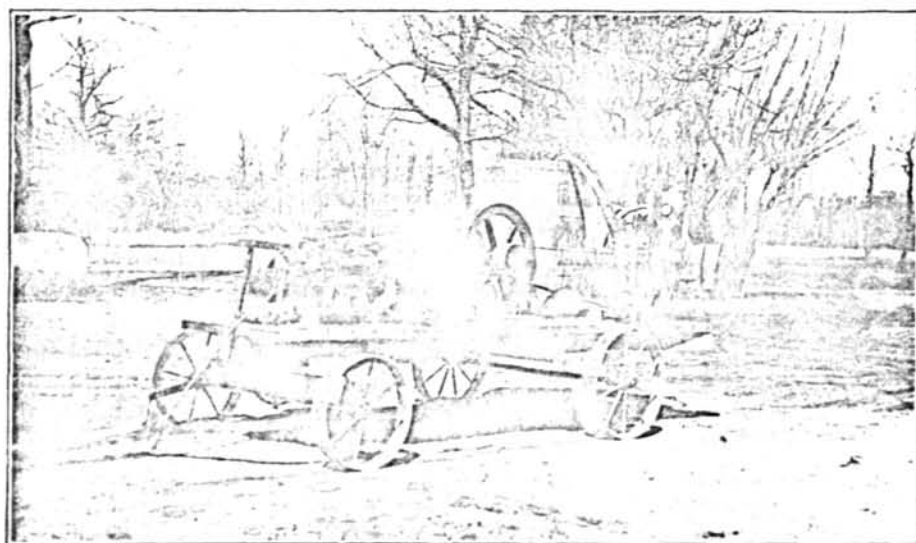
### Hole Cup with Flag Pin Guide and Ball Holder



The accompanying illustration represents the hole cup in use at our club and which is found to give the best results. It is made of strong-gauge galvanized sheet iron, with a funnel-shaped receiver riveted inside half way down. No matter how carelessly the pin is replaced after holing out, the point of the pin slides into its proper place automatically; also the cup is well drained, and the ball not soiled. Any tinsmith can make this much cheaper than the ready-made cup.—HARRY PRYKE, GREENKEEPER, CALGARY GOLF & COUNTRY CLUB, CALGARY, ALBERTA.

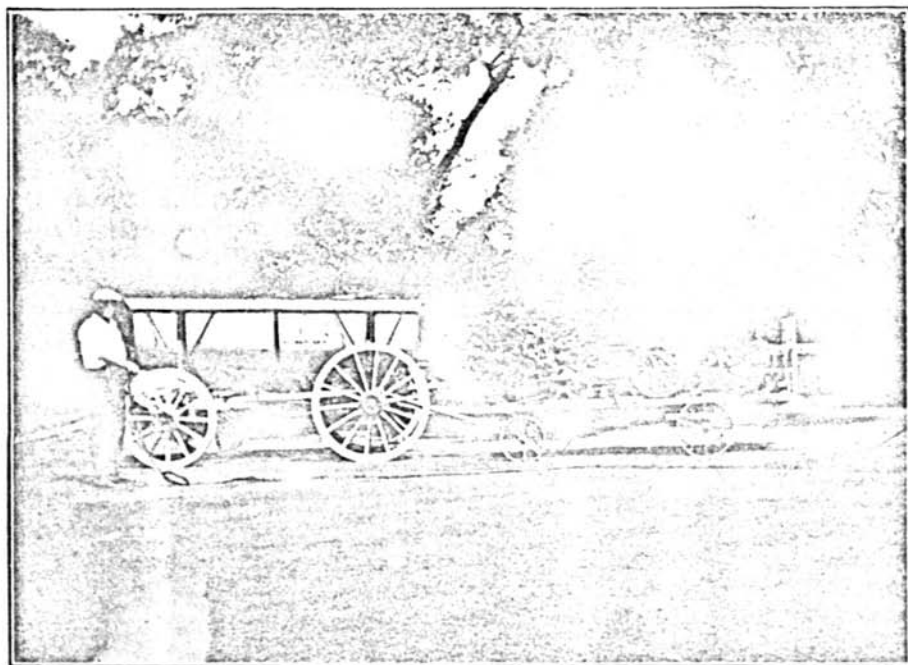
### A Combined Pumping Outfit for Applying Liquid Manure, Chemical Fertilizers, Corrosive Sublimate, and Bordeaux

ALFRED E. McCORDIC



The illustrations herewith show an efficient and economical combination pumping outfit for making applications of liquid manure or solutions of ammonium sulfate, nitrate of soda, Bordeaux mixture, or corrosive sublimate, which has been used very successfully at the Indian Hill Club, Winnetka, Ill. It consists of a power plant and a storage tank. The

tank is a galvanized steel thresher tank of nine-barrels capacity, permanently fixed on a wagon. The pumping outfit is fixed on a low truck with a platform 9 feet long and 3½ feet wide, upon which is placed in the center a three-horsepower gasoline engine; at one corner an ordinary one-cylinder pump for spraying liquid manure, ammonium sulfate, or sodium nitrate; at the diagonally opposite corner a power spray for Bordeaux mixture; at



another corner a hose-reel; and near the engine a 50-gallon wooden barrel for Bordeaux or corrosive sublimate. The steel tank on the separate truck is for holding liquid manure or the chemical fertilizers in solution. The power plant and thresher tank wagon are hauled from green to green, either by horses or auto. With this outfit Bordeaux mixture can be sprayed on eighteen greens in three to four hours, using, of course, a Bordeaux spray nozzle. A better, though more expensive plan, would be to have the platform permanently fixed on a light automobile truck which could be used also in hauling the thresher tank wagon.

**ADVANTAGES OF TOP-DRESSING DIRECT FROM THE DUMP CART.**—I have read a great deal in THE BULLETIN of the different methods of topping greens by using a wheelbarrow. I find, however, that by mixing everything that is needed for topping, at the compost pile, including seed, and then taking as many loads as necessary and topping direct from the dump cart, I can save time and material. Furthermore, by this method nothing objectionable remains near the green to annoy the golfer; no grass seeds are shoveled up with the top dressing, and that cherished rendezvous of the Japanese beetle—spots where manure has been dumped—is no longer close to the