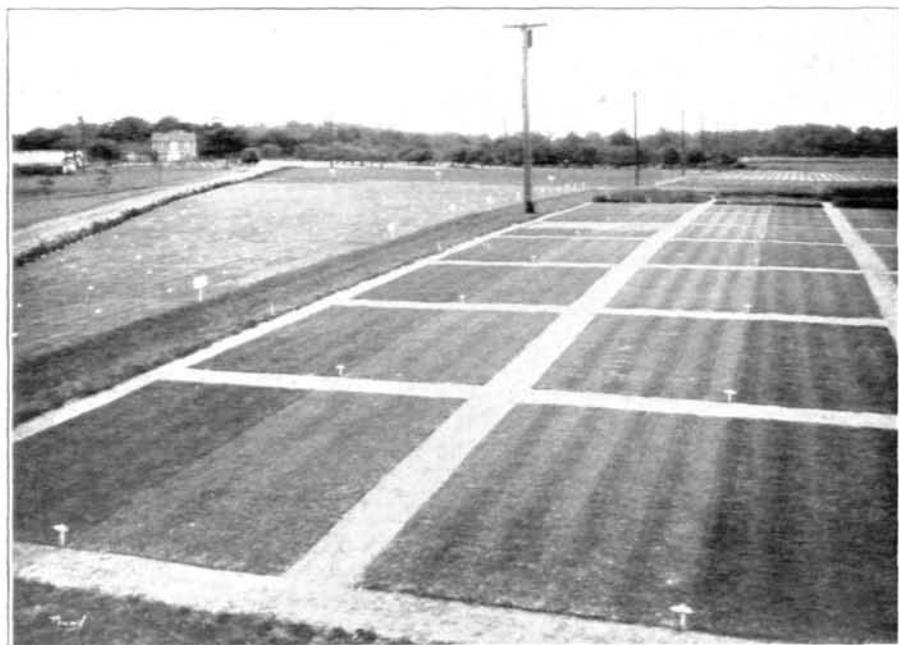


A group of 14 species and strains of grasses are being grown in plots 20 by 20 feet to observe the value of each in this climate. One-half of each plot is cut at putting green length and the other half at fairway length.



Experimental plots at the New Jersey State Station. Photograph taken in June, 1928

The 14 plots at the right of the telephone pole contain the experiment in height of cutting, each plot having a different kind of grass. At the left of the pole are plots of Virginia and Metropolitan bent kept at putting green height. These contain miscellaneous experiments, including comparison of fertilization treatments, use of different proportions of sand and soil in top-dressing, comparison of various compost materials, and the value of arsenate of lead. The plots are 10 by 10 feet in size

A nursery of turf grass selections is maintained which contains a number of strains of bent grass obtained from golf courses, lawns, parks, and pastures throughout the state. Some of these are promising enough to warrant trial under putting green conditions.

The United States Golf Association Green Section is now contributing \$600 a year for conducting these experiments; the balance of the cost is borne by the State Agricultural Experiment Station.

Our soil is a heavy silt loam grading into a clay loam at about 2 feet. It is a little below the average in fertility, but is well drained.

### A New Experiment Station In Chicago

In September, 1928, a new experimental turf garden was started just north of Chicago. This garden will be under the direction of the United States Golf Association Green Section. It is located near Everett, Ill., on the Mill Road Farm Golf Course, the private course of Mr. A. D. Lasker.

About 20,000 square feet have been planted so far and the area will probably be increased early next season. It is divided into two distinct areas, one portion of which is devoted to experimental work and the other to demonstration plots. The experimental section is cut up into plots 8 by 8 feet, similar to the Arlington Turf Garden plots. Certain sections will be devoted to testing various fertilizers on both putting green and fairway turf. Other sections will be devoted to weed control experiments, various grass strains or grass mixtures, diseases, and similar problems. The demonstration portion has been



Planting the new experimental turf garden. Mill Road Farm Golf Course, Everett, Ill., September, 1928

planted in 12 plots 24 by 24 feet, using different putting green grasses. These plots will be maintained in good putting green condition and will enable visitors to compare the quality of the different grasses maintained under identical conditions. Most of the common putting green grasses, both seeded and stolon, have been planted separately in plots 8 feet square, where they can be kept in the best possible putting green condition for direct comparison with the larger demonstration plots. Nursery rows of the important golf course grasses will probably be available for comparison by early summer.

## Turf Experiments at Nebraska College of Agriculture

By Fred V. Grau

In the latter part of September, 1925, Nebraska's first experimental turf garden was started in the Plant Museum of the University of Nebraska College of Agriculture, at Lincoln. This was made possible through the efforts of Dr. C. V. Piper, who at that time was senior agronomist in charge of forage crop investigations of the United States Department of Agriculture, and the cooperation of Profs. W. W. Burr and F. D. Keim, of the Nebraska station, who completed the arrangements. The shipment of stolons and seed was made from the Arlington nurseries at Washington, and the stolons were planted about the first of September. A good growth was made during the fall. All the grasses except the Acme velvet bent came