

for match play competitions, because those particular rules *do not* apply to medal play.

A player's ball from the tee went into the rough and lodged under some large growing leaves. In taking his stance the ball was not visible, so the player spread several leaves so that the ball could be seen. Nothing growing was broken, nor was the ball moved nor the lie improved. Would like to know if this is permitted in the rules.

Decision.—Rule 15 covers this point. It states specifically that the player is not entitled to bend or break fixed or growing things in playing the actual stroke after he has taken his stance. In this case, the player violated Rule 15 and the penalty would be the loss of the hole in Match Play and two strokes in Medal Competition. The fact that he found his ball is sufficient proof that he knew its location but he is not entitled to bend the growing leaves back to get a better view of the ball.

The Old Flatbush Golf Club

By Maurice J. McCarthy

The Old Flatbush Golf Club is built in the heart of Brooklyn, N. Y. With two million people in the immediate vicinity, it is naturally a novel situation. It comprises 53 acres of land, valued at over three million dollars. One of the tees (fifth) is built on a lot between two large apartments and is worth \$20,000. A large public school is back of the fifth green and a church is on the side of the seventh. A main thoroughfare (Bedford Avenue) runs through the center of the course. The land had been used for years as a circus field, baseball lots, dumping ground, etc. The owner, being a golf enthusiast, finally decided to have a course constructed unless the problem should prove too difficult. Several streets end at irregular points on the borders of the land, and it required some strategy to get nine holes in, without crossing these or Bedford Avenue. However, a very fine 3,065-yard course was finally designed.

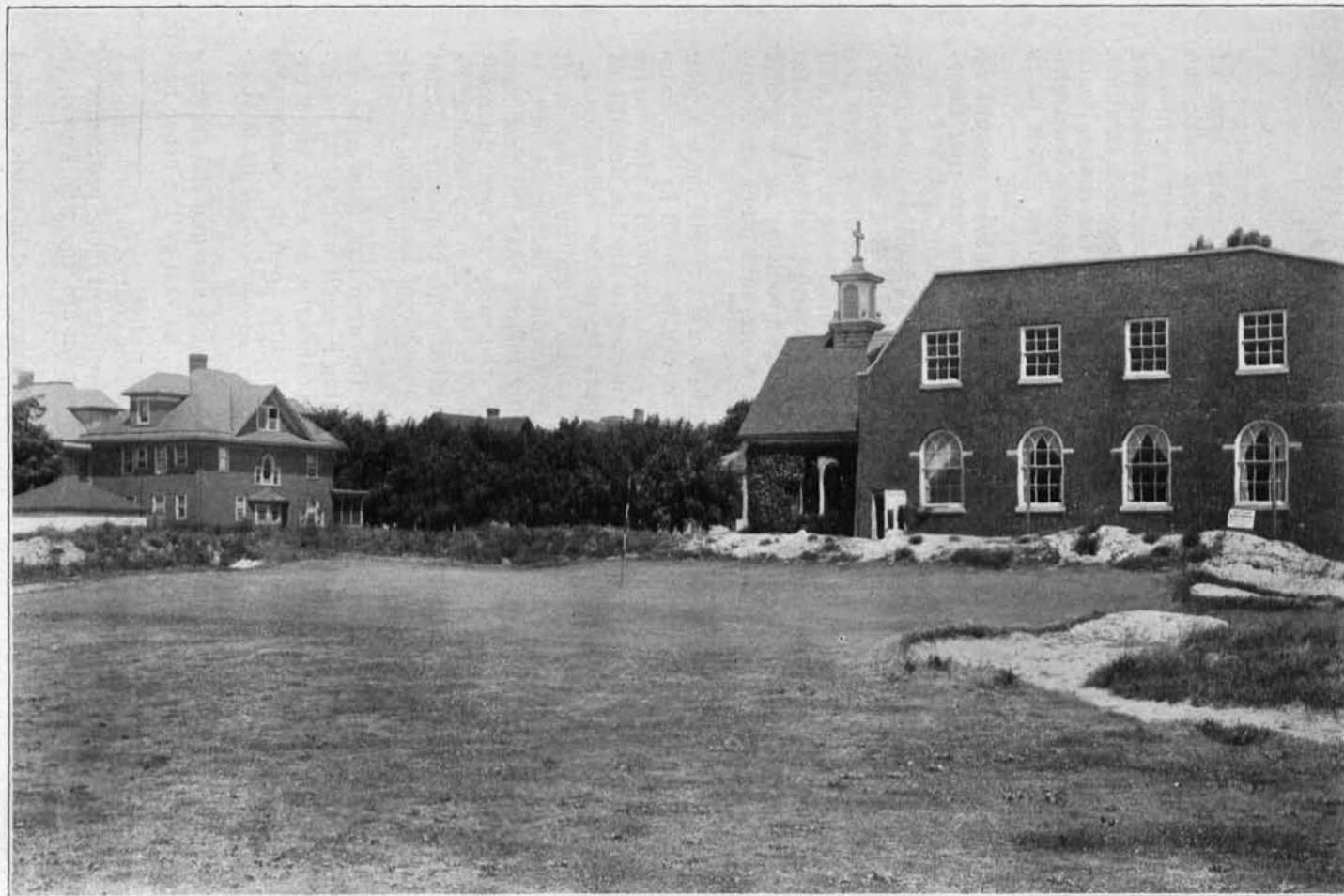
Work was started on October 1, 1924. After considerable trouble with the hard ground (more like cement), having to use a crushing machine to break it up, the greens were built and planted with creeping bent before the first of November. The tees and fairways were constructed and seeded before the end of the month, thereby establishing something of a record in having designed, built and seeded the course within two months. The spring of 1925 saw the greens coming along splendidly, and play was started in August, just ten months after ground was broken.

The creeping bent has proved very satisfactory, and except for three months last winter, the course was used to capacity whenever the weather did not interfere. As many as 106 played at one time, and round after round has been the same on fine week-ends. When the course was closed last December, despite the very rainy season and hard playing, the greens were in excellent condition.

A number of the members belong to various clubs throughout the Metropolitan District but live in the neighborhood, and without exception they say our greens are as fine as any in this section, and it is indeed a source of satisfaction to know they compare so favorably with other courses many years older. A small nursery is kept so as to always be ready for any damage which may arise at any time.



First green, Old Flatbush Golf Club. This green has been rebuilt since the photograph was taken.



August, 1927

Seventh green, Old Flatbush Golf Club.

155