

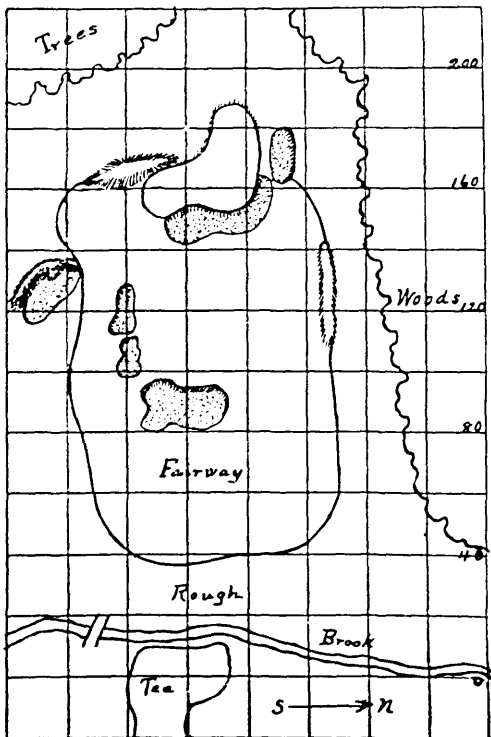
ANSWER.—The Rules of Golf Committee of the United States Golf Association rules as follows: Rule 20, paragraph 2, does not apply to this case. It covers only the case where the ball is not engaged in the match. A loses a hole under the provisions covered by Rule 20, paragraph 1, unless he replaces the wrong ball with which he has played and plays out the hole in proper order; or if each of the players plays the wrong ball, the hole stands as played with the balls thus exchanged. Rule 31, paragraph 2, provides for playing out of turn and does not provide for playing the wrong ball.

QUESTION.—Can a ball in a hazard lying within a club's length of a water pipe in the hazard be dropped back without penalty? Also, if in a deep ditch, say about 5 feet deep, a water pipe runs across the top of the ditch and a ball rests immediately below the pipe more than a club's length from the nearest point of the pipe, could a ball be dropped back without penalty if the pipe interferes with the swing in playing the ball? Our committee was called upon to give a ruling in a similar case, and would feel greatly obliged to have an official answer to the above question.

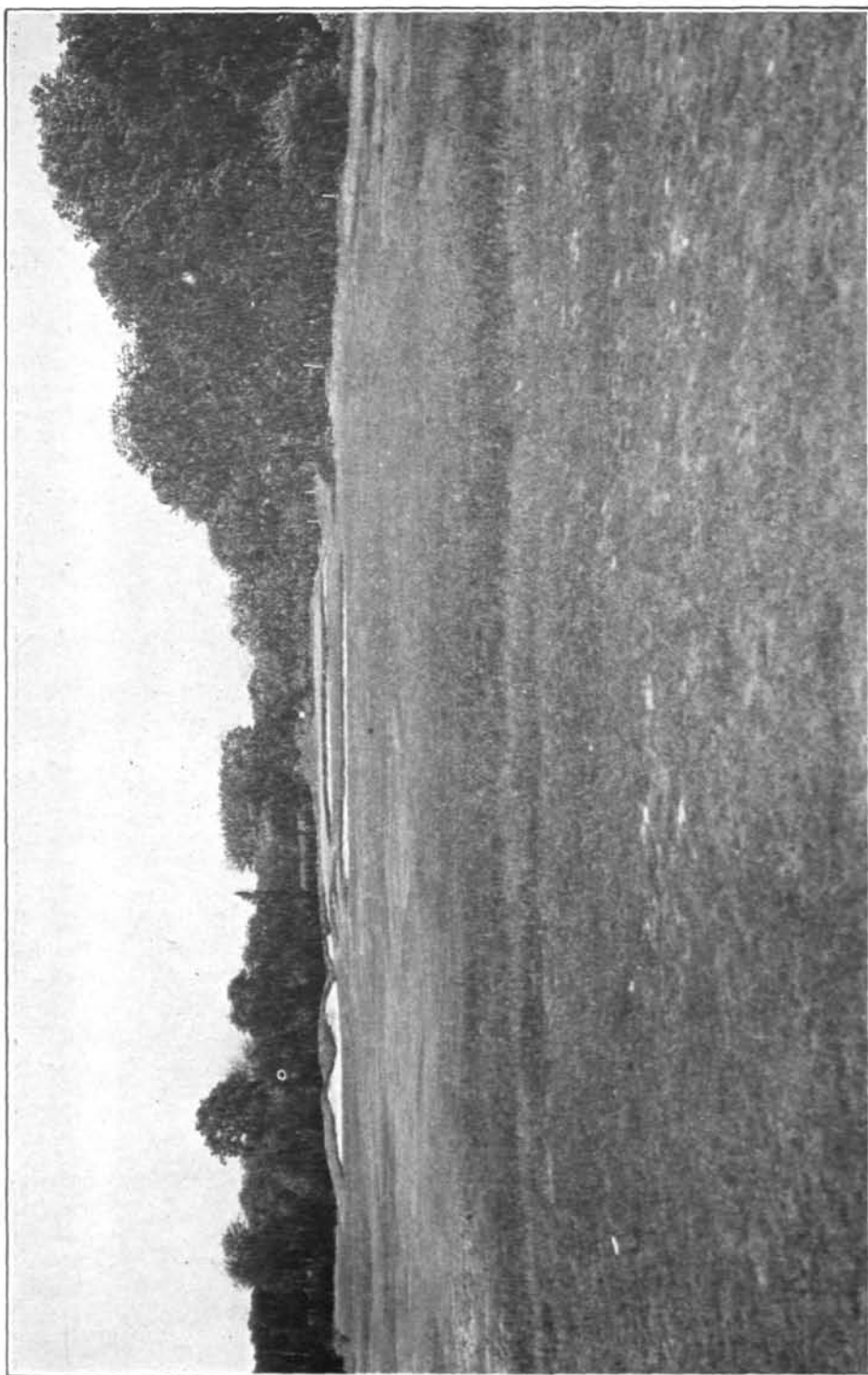
ANSWER.—Your first question is answered in the affirmative, attention being invited to the footnote to Rule 11. Our answer to your second question is that the ball could not be moved, as it is more than a club's length from the pipe. Your committee should form a local rule to cover this situation.

Instructive Golf Courses IX

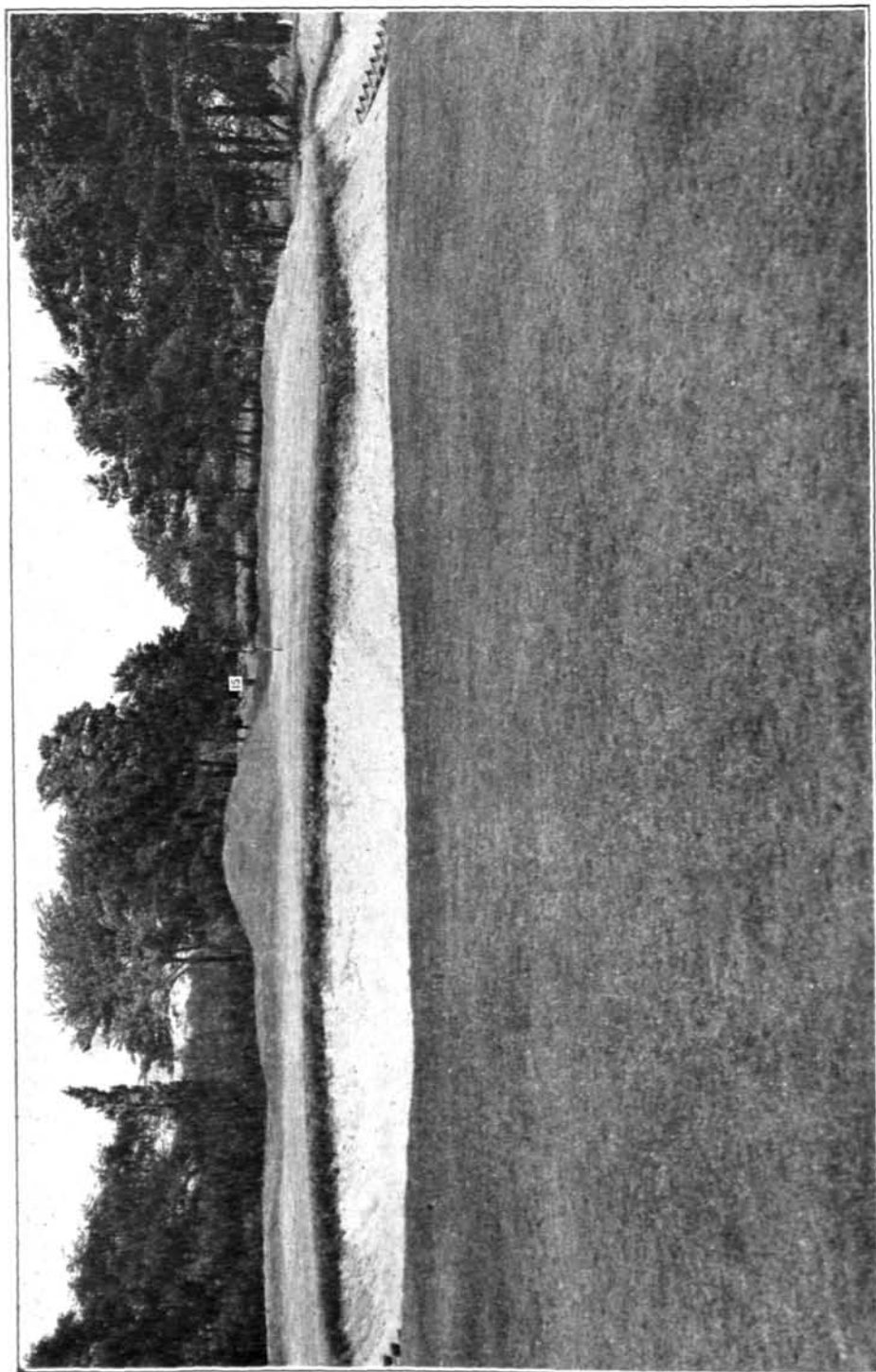
No. 15, Hollywood Golf Club, Deal, New Jersey



A beautiful one-shot hole extending due west, whose length can be varied from 160 to 185 yards, thanks to generous teeing ground. From tee to green there is a slight upgrade, every detail of the hole standing out clearly. The green is strongly guarded, particularly by a long bunker in front. Behind, it is flanked by ridges so that a well-played ball does not roll over the rather small green. This measures about 4,500 square feet. Back of the green is grass, from which a pitch of about 8 feet is necessary to put the ball on the green.



Hole No. 15, Hollywood Golf Club. View from Tee.



Hole No. 15, Hollywood Golf Club. Close-Up View of Putting Green